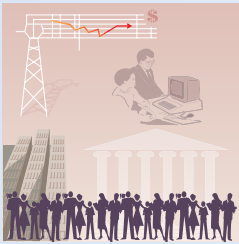


The DPSIR Framework

(Driving forces-Pressures-State-Impacts-Responses)

Driving Forces



Socio-economic and socio-cultural forces driving human activities, which increase or mitigate pressures on the environment.

Pressures



Stresses that human activities place on the environment (eg. wastewater)

State of the Environment (SoE)



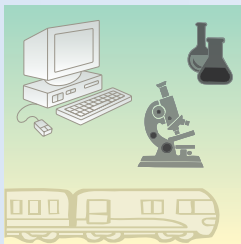
The condition of the environment (eg. the assessment of air or water quality)

Impacts

Effects of environmental degradation (eg. biodiversity loss, economic damage).



Responses



Responses by society to the environmental situation (eg. cleaner production, regulations).